

emmadenby.uk
[instagram.com/emmadenbyart](https://www.instagram.com/emmadenbyart)

emma.denby@outlook.com



Emma Denby

Project Portfolio



Contents

Collaborations 3-7

Sirens / Connections / The Caretakers / Brian's Bench / Expanse of Existence

Solo Projects & Personal Practice 8-18

Neuro Windows / Wakefield Exchange / Together, Under the Sun /
The People's Pantry / This is Here, This is Home / Lawkholme Bridge Mural /
Thetford Sculpture Trail / Well Creative Festival /
Lighthouse Futures Trust / MA / 2D Works

Workshop Facilitation 19-22

Sonic Whispers / Barnsley College / Rotherham BME / The Blank Page Project

Prop Making & Set Building 23-24

Sensory Cinders / Spiral House

Sirens

09/2022

Commissioned for Hull's Freedom Festival in collaboration with Liminal Creative and Aimees Freedom Choir.



At Freedom Festival, the theme we took on board was Modern Slavery. Working with Aimees Freedom Choir, a group who have all been victims of human trafficking, we recorded their voices to add to the installation, inside the sculptures. Placed in the configuration of the constellation, The Pleiades (The 7 Sisters), the 'stones' represented solidarity and strength. As audiences walked through the sculptures, the light up and speak to you with the voices and song of the choir.

Connections

11/2022

Commissioned for Lightwaves and GLOW in Salford, in collaboration with Gemma Wood



Using Dunbar's Number as a reference point (150 is the maximum number of meaningful connections one can have in their life), we worked with the community to gather ideas and images of how people present themselves online. These images were then printed onto acetate and inserted into resin balls that represented the participants. The acrylic tubes then symbolised the various connections we make with others.

The Caretakers

10/2023

Commissioned for Frequency Festival in Lincoln, in collaboration with Liminal Creative.

Using creative technology to create an interactive cart, the narrative of The Caretakers illustrated the process of memory loss and how it can impact those around you too.

Premiering for its first outing at Frequency Festival, we took the cart to Lincoln Cathedral and to the high street to showcase the performance.

The cart was built using an old farm wagon, adding front wheels and a structure inspired by Howl's Moving Castle.



Brian's Bench

05/2023

Documentary Film by Andy

A collaborative project at KHL community workshop in Corby to commemorate the workshops founder, Brian.



This project was a huge undertaking by the community of Corby. Brian was the workshop founder of KHL community workshop, but sadly passed away before the workshop opened its doors.

Supported by a Wickes grant and local donations, the old Corby may pole was cut into usable chunks by local lumbersmiths and then the participants got to work in cutting and shaping the bench for their new memorial garden.

Expanse of Existence

05/2023

Working with Liminal Creative as Artists in Residence at Ferens Gallery in Hull.



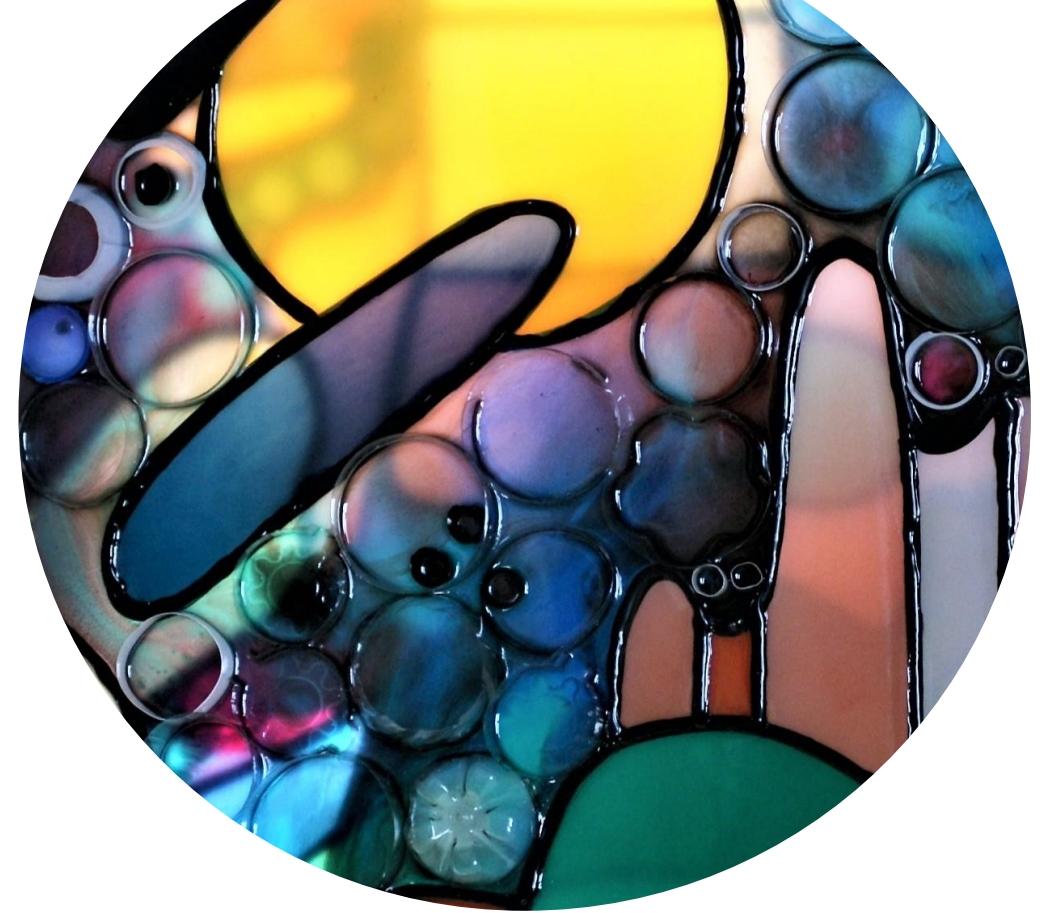
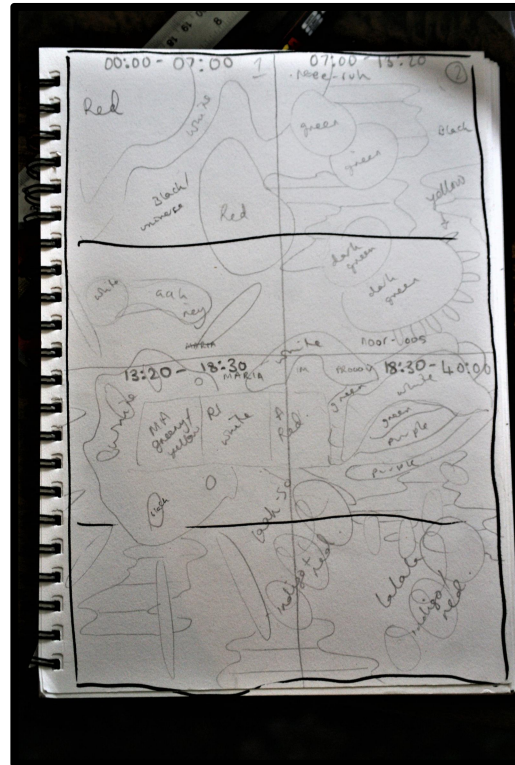
This installation, shown at the project space at Ferens art gallery, was an ethnographical piece which focussed on the female heritage of Louise Cole, Liminal Creatives Creative Director and Founder.

The ribbons represented the connections of her family, with different colours further illustrating their complex and often difficult lives. The piece also used motion sensing to detect the presence of others, playing a monologue created by Louise.

Neuro Windows

03/2023

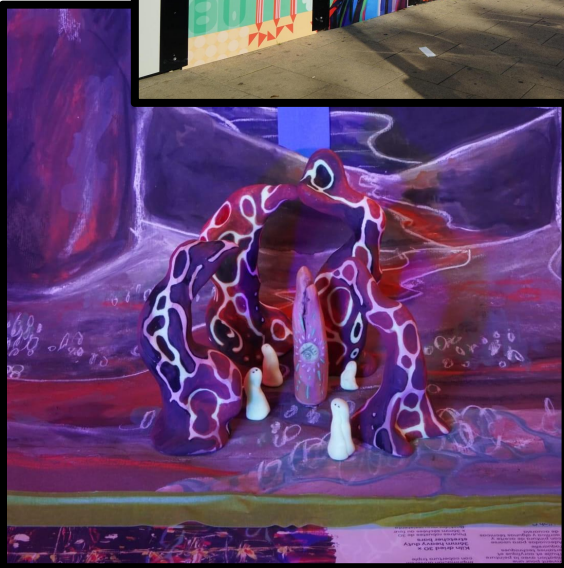
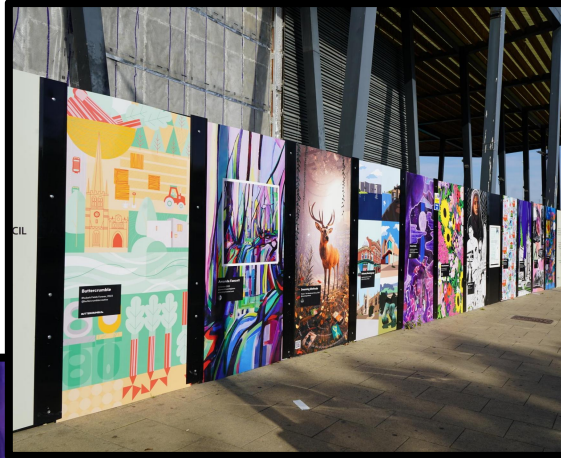
Created for Hinterlands Film Festival in Skipton in collaboration with Skipton Castle Choir, and commissioned by Wild Rumpus.



This commission invited me to create a response for the Hinterlands Film Festival. Inspired by the vocals of Skipton Castle Choir, I drew my reactions based on the experience I have with Synesthesia (seeing images/shapes/colours in my head when listening to music), and created a stained glass effect light up panel to display in a ginnel across the high street.

Wakefield Exchange

08/2023



Highlighting local creatives in Wakefield, I was commissioned by Wakefield Council to create an artwork to display on the hoarding whilst Wakefield Exchange was renovated.

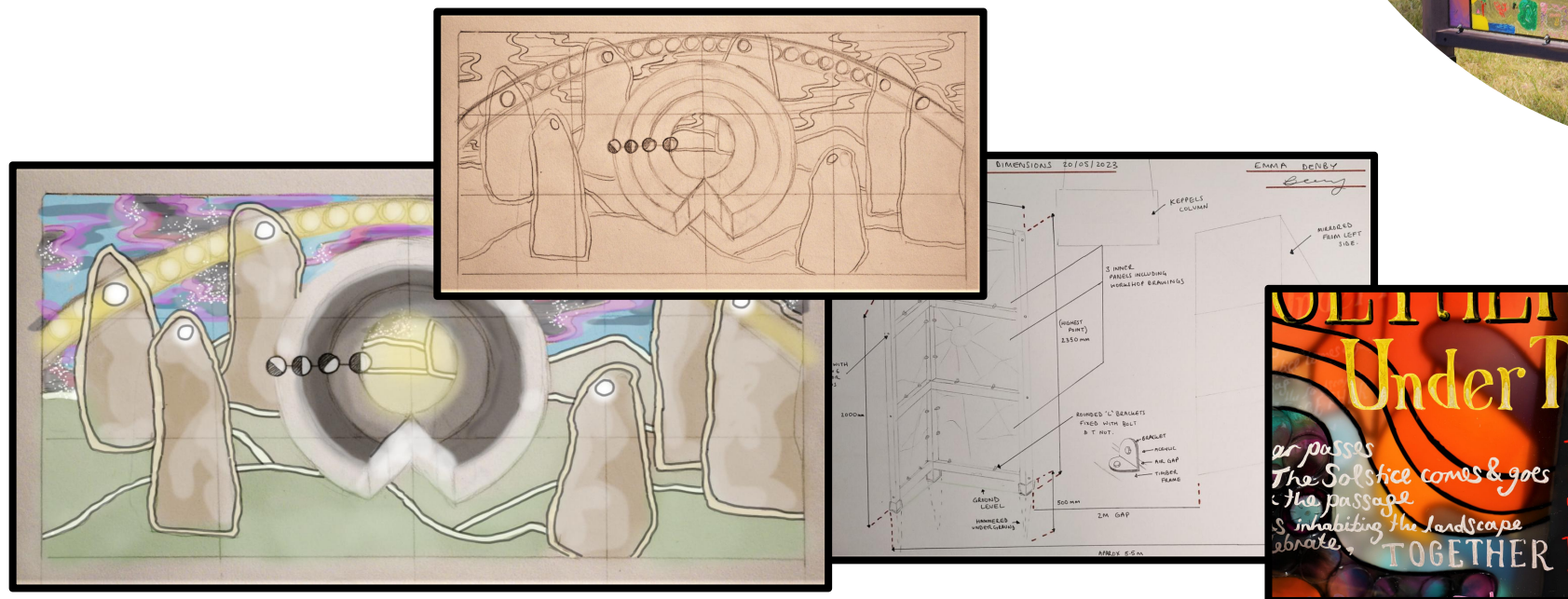
This provided the opportunity to support local creatives to showcase their personal work and for me, to create a brand new work using new techniques (incorporating 2D and 3D elements in one image).

Together, Under the Sun

07/2023

Working alongside community groups and students adjacent to Keppel's Column in Rotherham.
Commissioned by Rotherham Council

To celebrate the opening of Keppel's Column in Rotherham, I worked with Rotherham Council and community groups to explore what local monuments meant to them and what their mark on the landscape could look like.



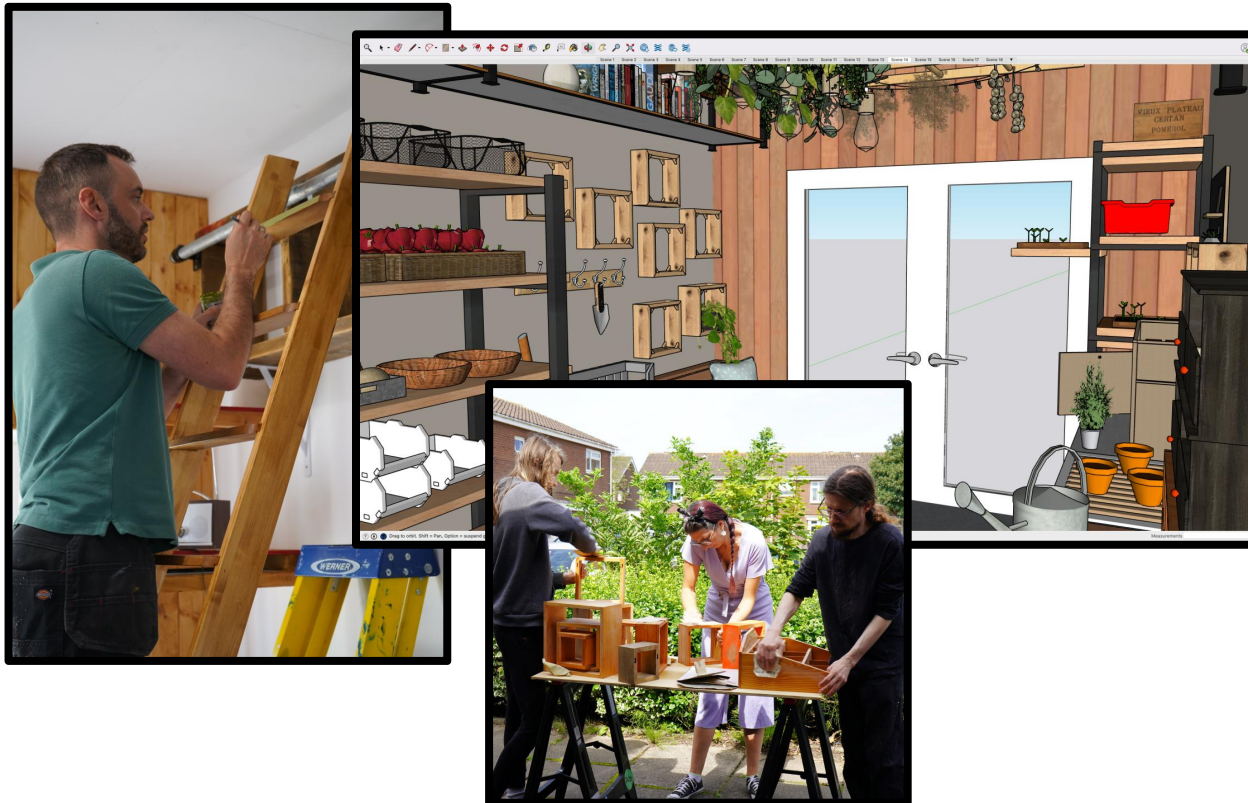
Community Groups Involved

ArtWorks Rotherham
Bede CofE Primary School
Men with Sheds Wellbeing Group
Kimberworth Community Youth Group

The People's Pantry

08/2023

A community project working with LeftCoast Blackpool and the residents of Bostonway to create a public pantry and workspace.

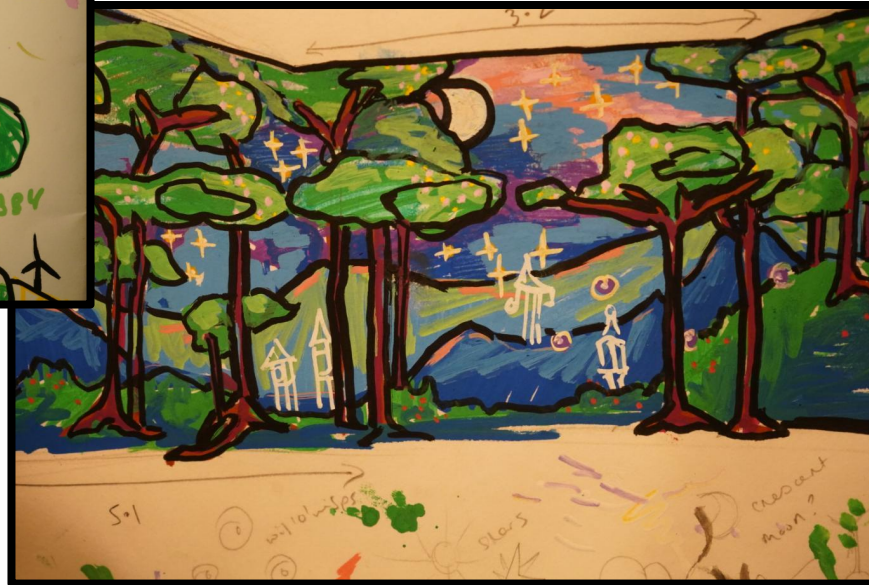
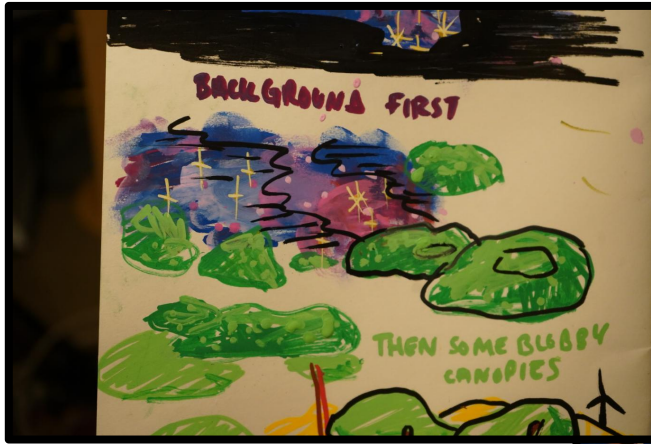


Working in close collaboration with the community, LeftCoast Blackpool handed over the keys to a bare space which had just been emptied to turn the space into a pantry. Although the space was small, I designed the space to be multi-functional and adaptable to facilitate potting, washing, prepping, relaxing, socialising, working and storing food grown in the joining garden.

This is Here, This is Home.

11/2023

Created for BD: isLiT Light Festival in collaboration with Keighley community members. Commissioned by The Leap.



The group were keen to focus on the location of the mural, choosing to highlight the nature at Cliffe Castle Park. For the festival, UV paint on the mural lit up in coloured fluorescent outlines with a soundtrack and orbital lights.

Lawkholme Bridge Mural

04/2024



This project sought to bridge the gap between communities who faced rising tensions due to criminal activity and anti-social behaviour. Working with local poet Wallsy and a youth group and social workers, we worked together to design a mural which displayed the local features and highlights for the group. This was then accompanied by the poem created with Wallsy and the group.

Thetford Sculpture Trail

06/2024



With Drake Primary School, the project aimed to raise awareness for the environment, and how the arts could be used as a tool for awareness and skill building.

Partnering Thetford primary schools with local business's, I worked with the pairing to use the business's waste products to create sculptures with the students. With these 6 pairings, we created a sculpture trail over the summer holiday which featured their creations.

Well Creative Festival

09/2024

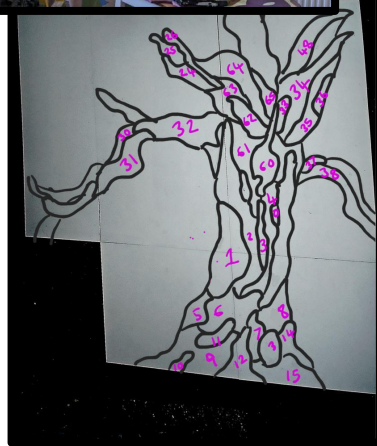


Working with Wellingborough Creative, a youth group which runs experiences and events, they influenced my practice by deriving their own narrative from my work. For the Well Creative Festival, I created their version of my work to display, focussing on accessibility for their local audience, and producing a comic-book style representation of my work.



Lighthouse Futures Trust

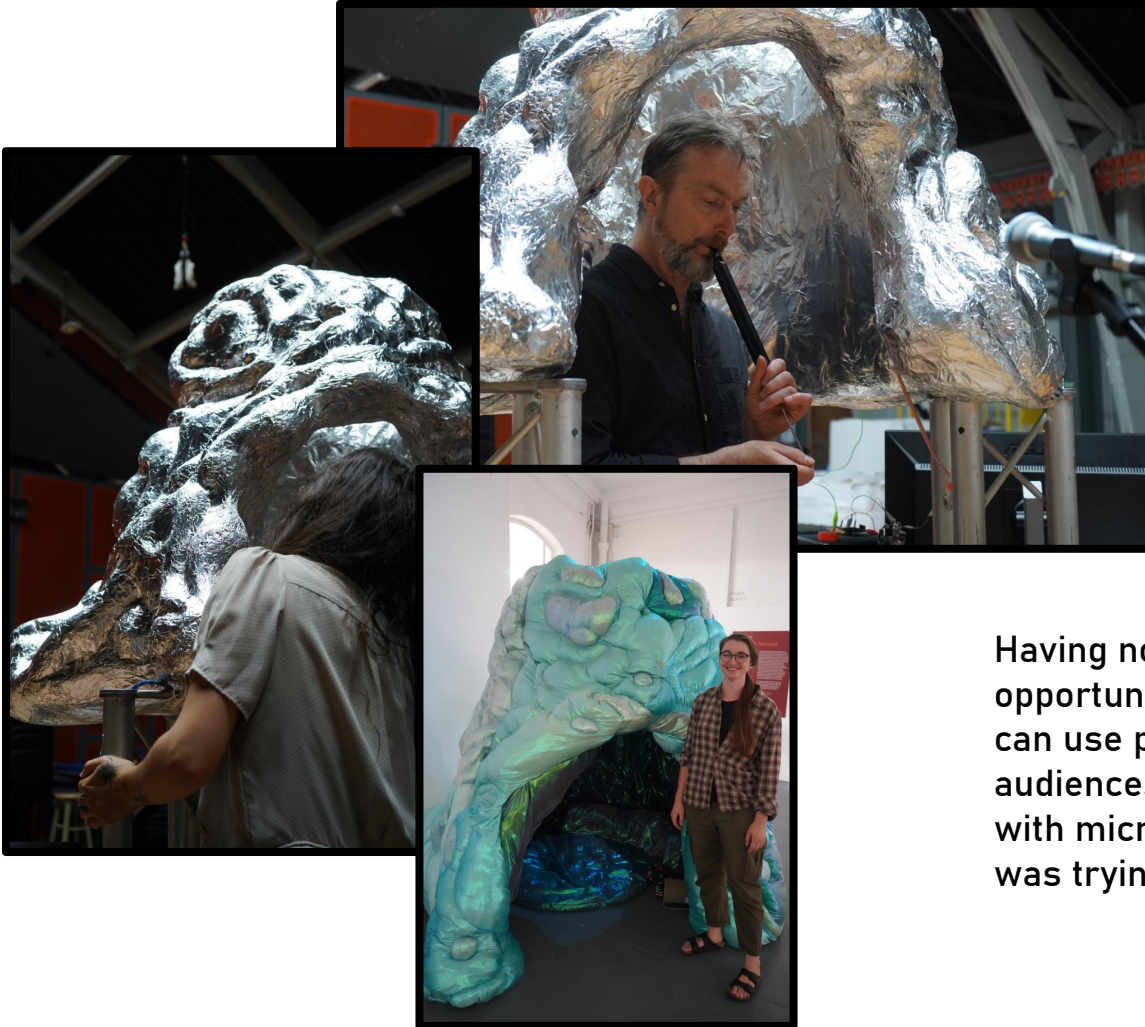
07/2025



This project aimed to transform a space at the LFT base in Headingly with a focus on workshopping ideas and participation of the students. LFT's goal is to provide skill growth and opportunities for people who have additional learning or behavioural difficulties. By incorporating their ideas and creativity into this project, we created a 3D mural where individually, they created a panel which represented their journey at the trust.

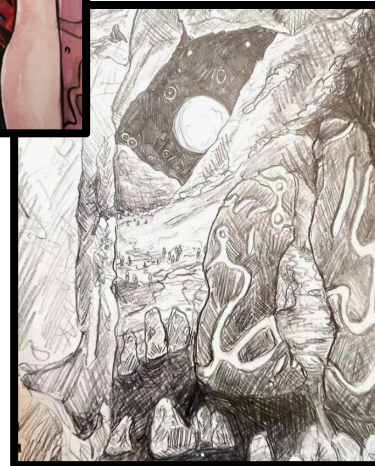
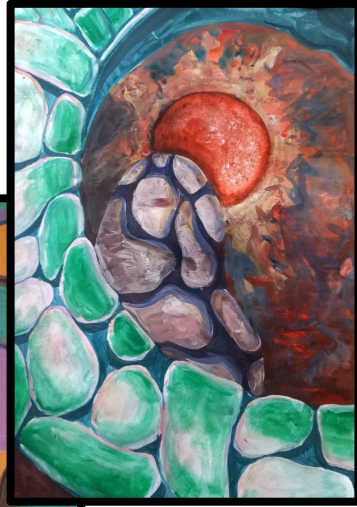
Masters Final Project

08/2025



Having now completed my Masters in Fine Art, the final project was an opportunity to exhibit my practice and research enquiry. Interested by how we can use play as a tool to access art, I created an enclosed space where audiences can act autonomously to play and explore. Using a soundscape inside with microphones to input audio, the installation responds to sounds as though it was trying to communicate, further encouraging curiosity and playfulness.

Ongoing 2D Works



Sonic Whispers

05/2023



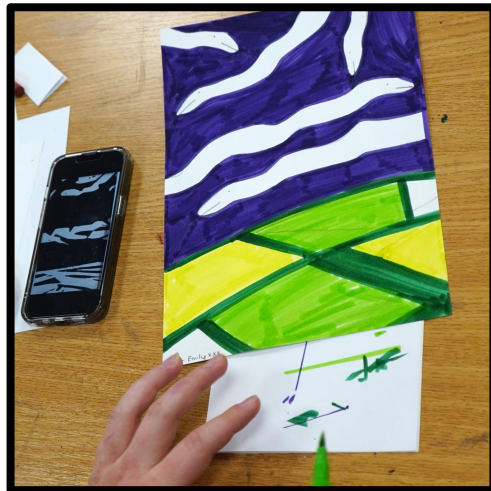
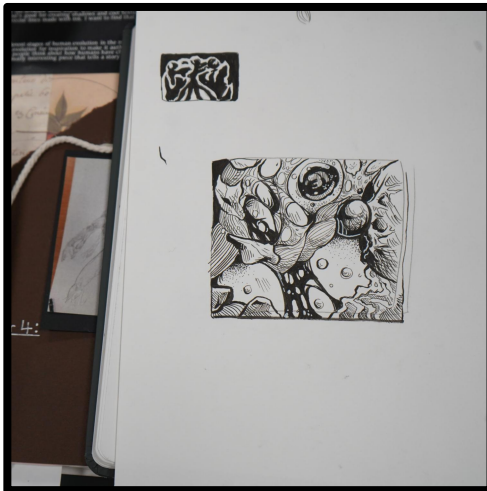
Taking part at Libraries around Barnsley, these workshops ran by myself and Musician Carl Cole encourages participants to listen to sounds and music, but to respond through visual language such as drawing and sculpture.

Targeted for audiences of all ages and abilities, these workshops provided a look into the mind of having synesthesia, whilst responding playfully in free ways that encouraged open thinking and mindfulness.

Barnsley College

01/2024

As a guest Artist for the Art students, I ran a workshop where I asked them to create a small frame and to lay it over their existing work. This created small apertures of interesting shapes and colours that could generate new inspiration and images. The exercise taught them to not be too precious about where they can find influence to create work, and to encourage play in their approach to making.



Rotherham Parents & Carers BME Community Group

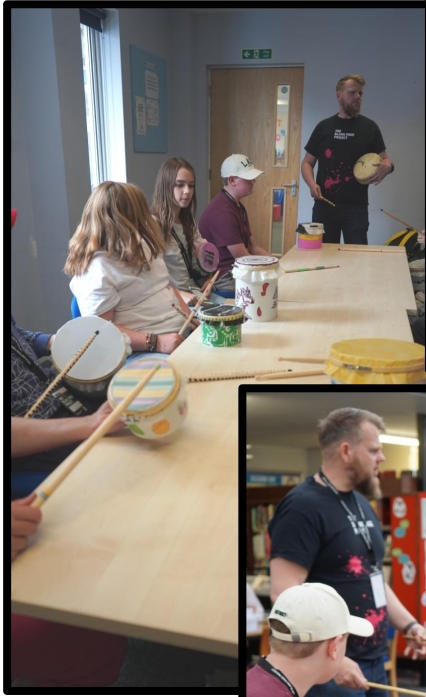
09/2024

Working with Rotherham Council, we worked with the community group to showcase their solidarity and connections through a stained glass window style installation. Culminating in an Arabian inspired image window, the group hosted me over several sessions, integrating me into their group and providing a wonderful experience whilst showing an insight into their community.



The Blank Page Project

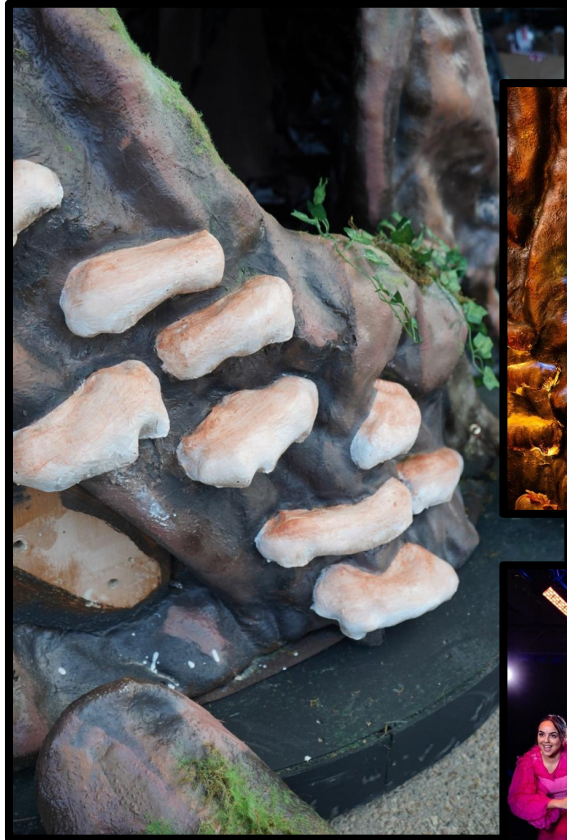
Ongoing Seasonally



Taking place across libraries around Suffolk, The Blank Page Project is a seasonal project which allows young people to access food and workshops during a time where parents may need to work during the holidays. Aimed at providing free meals and a creative activity, Musician Carl Cole and I have facilitated various workshops including drum making, song creation, landscape painting, world building and jesmonite casting.

Sensory Cinders

10/2024



Working with Concrete Youth, this production was created for audiences with Profound and Multiple Learning Disabilities (PMLD), providing a tailored theatre experience with small audience groups. As a take on Cinderella, the production focussed on using sensory stimulus to create an physically and emotionally engaging environment. This was achieved with light up embellishments, interactive sounds and lights, along with a mix of textures and aesthetic objects to experience.

Spiral House

05/2025

Commissioned by Frozen Light, I created the props and the sets for their production Spiral House, a 2 day long experience for participants with PMLD. These events are aimed to facilitate participants to enjoy intimate experiences with performers, being a part of the production in immersive spaces, as opposed to a traditional theatre production.

